



# PRESERVATION OF TOMB OF JAN BABA, WHS MAKLI

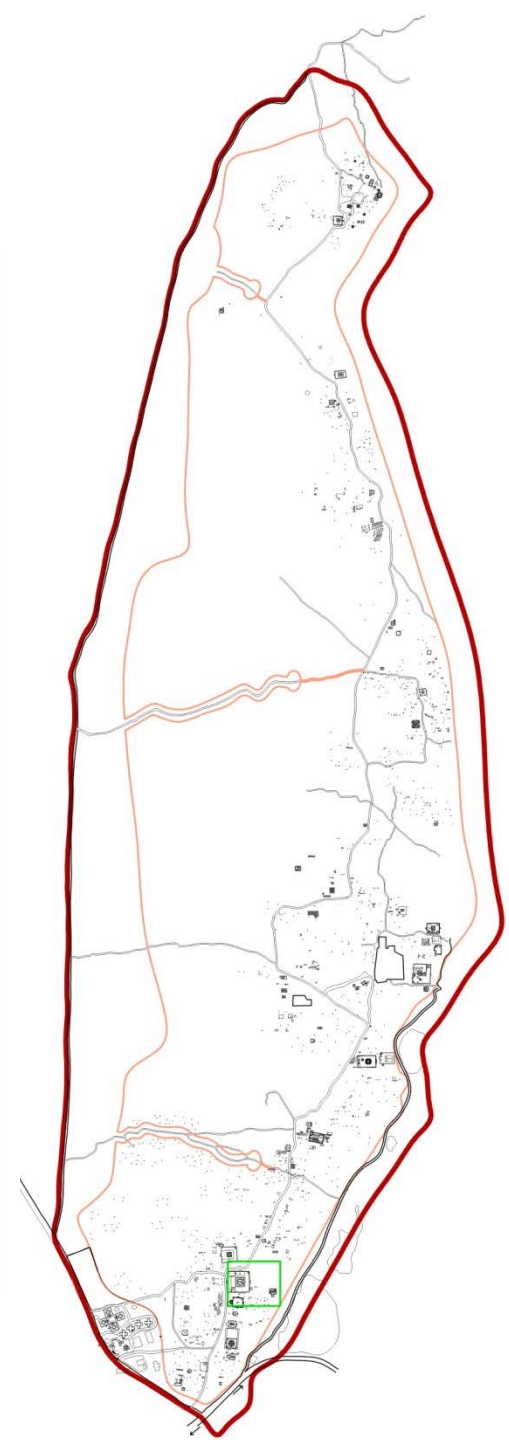
## 1<sup>ST</sup> EXPERTS' COMMITTEE MEETING

### *Folio II – Introduction to FRG Project*



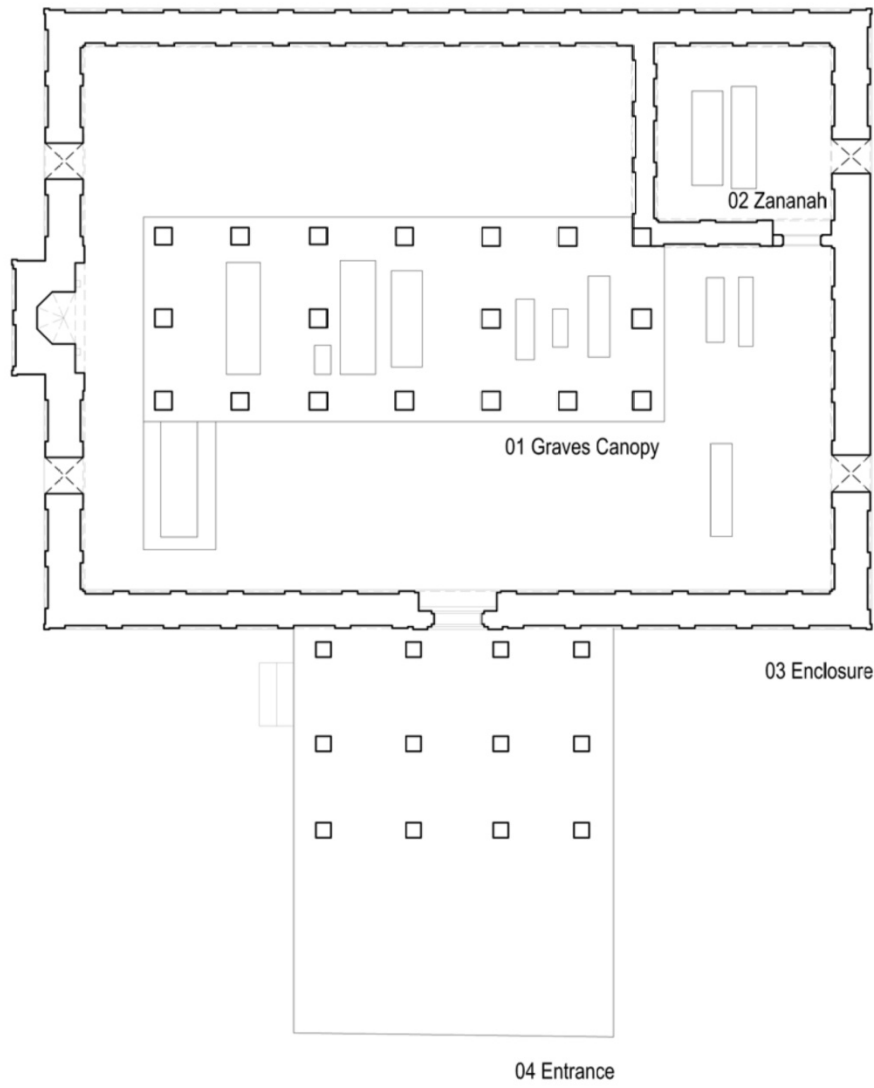
# SITE MAP OF MAKLI

## LOCATION OF SULTAN IBRAHIM TOMB




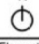


*View from SW*



Plan Level 02

Notes:  
--

No	Revisions	Date	Sign
Project: JAN BABA TOMB			
Folio: ARCHITECTURAL DRAWINGS			
Building: General			
Title: Plan Level 02			
 HERITAGE FOUNDATION OF PAKISTAN			
Scale: 1:125	N 		Date: Apr. 15
Folio AD	Category L	Element (2-)	Number 002

# PROJECT SCOPE

## PROJECT PERIOD

**1 December 2014 to 30 November 2016**

## PROJECT

### **Conservation Works**

#### **1. Tomb of Jan Baba**

##### **1.1 Entrance Deorhi**

##### **1.2 Enclosure Walls**

##### **1.3 Graves Canopy**

##### **1.4 Zananah Enclosure**

#### **2. Walkway, External works; Removal of wild growth, plantation, signage**

# PRESERVATION/CONSERVATION WORKS

## OUTLINE OF PRESERVATION/CONSERVATION WORK

- **Cleaning external and internal stone masonry.**
- **Treatment of damaged stone elements**
- **Water tightening by pointing and grouting of open joints.**
- **Repair and grouting of dressed stone flooring.**
- **Rehabilitation of deformed portions of pillars and joists.**
- **Rehabilitation of surviving dome.**
- **Treatment of collapsed domes.**
- **Treatment of grave stones.**
- **Restoration of walkway stone slabs.**



# PROJECT TIME LINE

## Phase I: December 2014

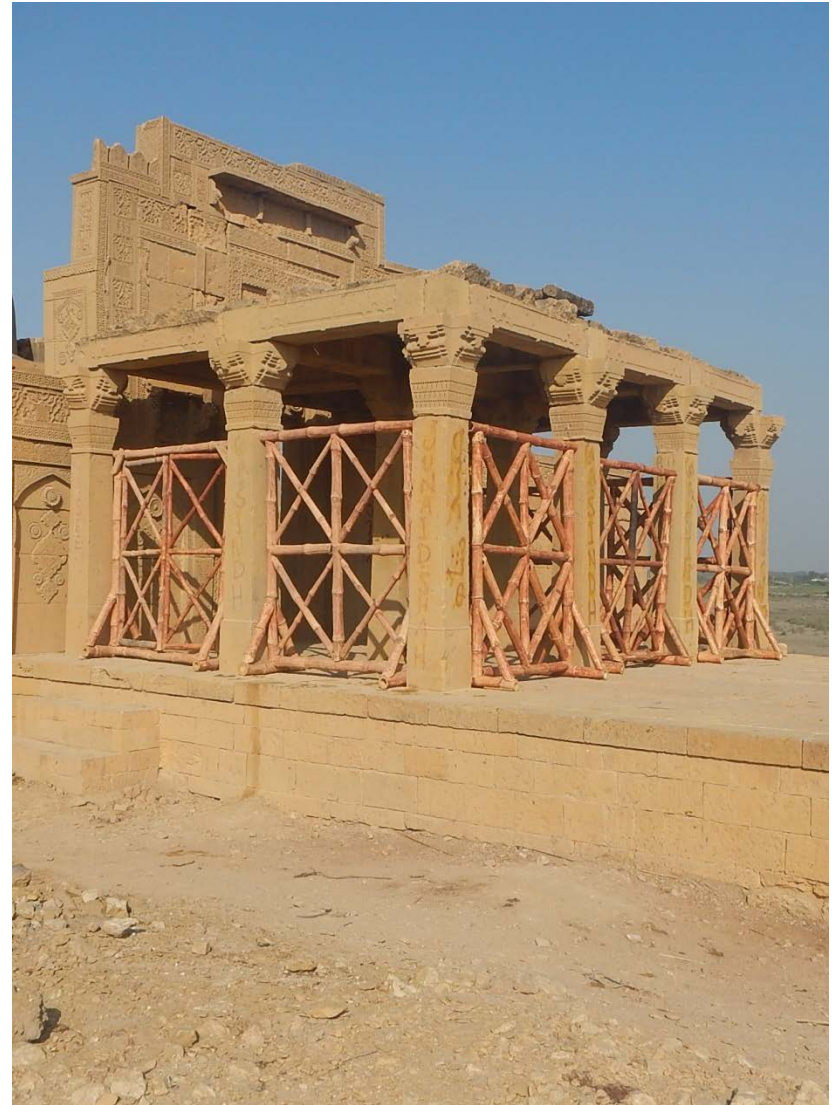
- Site Organization
- Mobilization
- Appointment of Consultants

## Phase II: January 2015 to April 2015

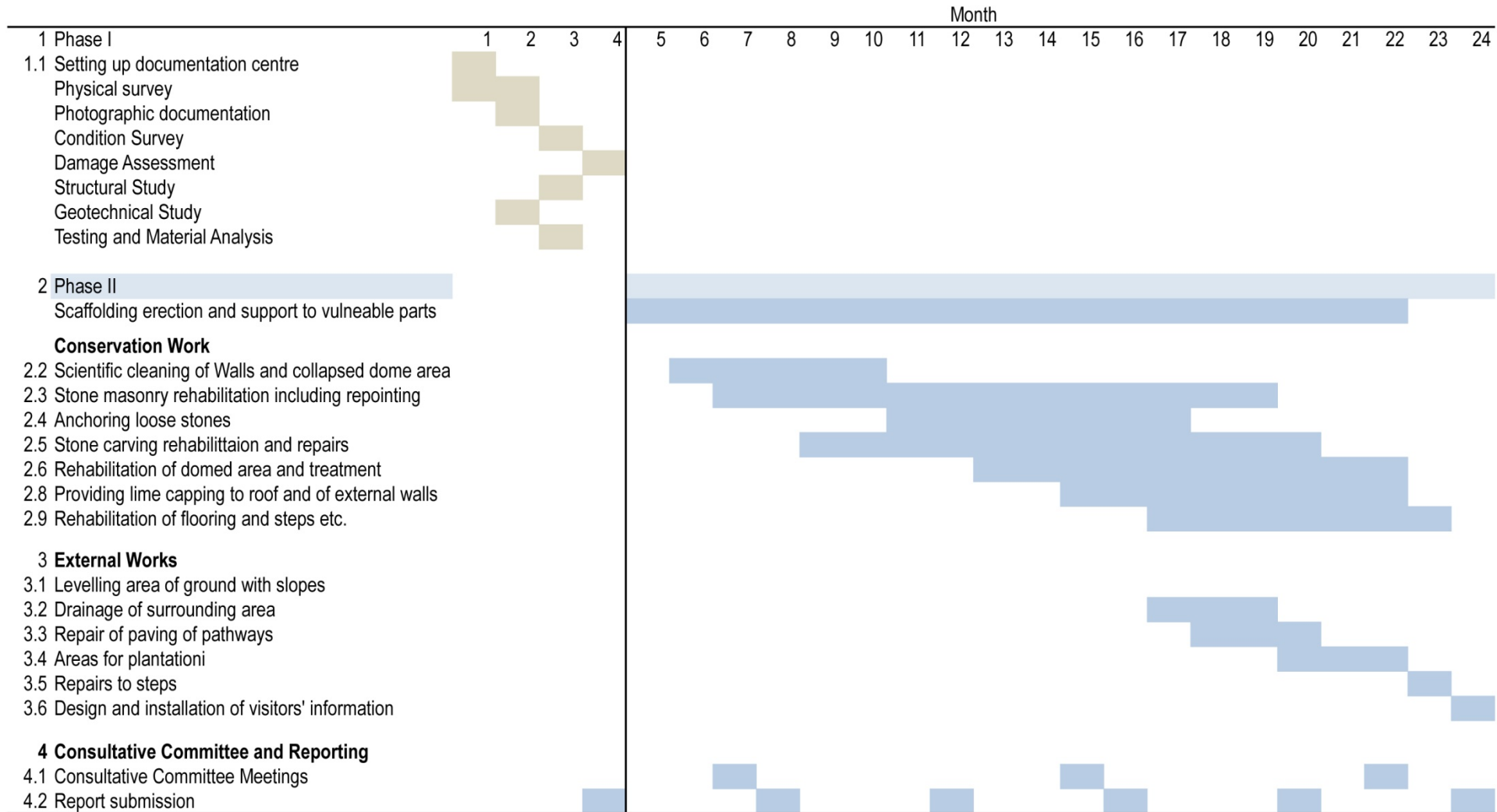
- Base Line Information
- Setting up Documentation Centre
- Geo-technical Study
- Structural Evaluation
- Condition Survey/Damage Assessment
- Physical Survey
- Photographic Documentation
- Material Testing and Analysis.

## Phase III: May 2015 to February 2016

- Cleaning of External and Internal Stone Masonry
- Conservation and Restoration of Elements
- Structural Stabilization
- Cleaning up and Restoration of External Area
- Plantation



**Annexure II**  
**Conservation of Tomb of Jan Baba**  
**WHS Makli**





# PRESENTATION FOLIOS

***Folio 1 (ID):*** Introduction to WH Makli

***Folio 2 (AD):*** Introduction to Tomb of Mirza Jan Baba Project

***Folio 3 (SV):*** Significance & Values

***Folio 4 (AD):*** Architectural Drawings

***Folio 5 (NS):*** Numbering System

***Folio 6 (PD):*** Photographic Documentation

***Folio 7 (SD):*** Image Superimposition

***Folio 8(DT):*** Condition Survey and Damage Assessment

***Folio 9 (CA):*** Consultants' Assessment

***Folio 10 (DT):*** Stone Damage Types

***Folio 11 (DD):*** Area-wise Damage Details